



All the patents are held accountable counterfeiting.

## Features

DIMENSIONS: 234.6(L) x 160.5(W) x 67.5(H)mm  
Weights: 2800g

- “Output Voltage Monitor” Display
- Output voltage (range of 70%~100%) can be adjusted by voltage input (0~10VDC).
- 100% burn-in test
- Burn-in power factor corrector
- 2 years Warranty
- Output modify range: 36V~380VDC
- Split rail & Series connection possible

## General specifications

INPUT

Input range	180~264VAC / 200~380VDC
Input frequency	47~63Hz
Max. I/P current / Inrush current (25° C)	16A/60A@220VAC
Power factor	95% Min/220VAC

OUTPUT

Hold-up time	10ms
Short protection	Re-power on to recover

## Detail specifications



3000W

MODEL	O/P Volt Adj. ± %	Load(Current) <sup>1</sup>			Ripple & Noise <sup>4</sup>	Line REG. <sup>2</sup>	Load REG. <sup>3</sup>	Efficiency <sup>5</sup>	O.V.P. Trip point
		Min.	Rated	Max.					
RPH13K0-24CDA	V1: +24V ±5%	0A	125A	125A	240mVp-p	±1%	±1%	92% Min.	27.6 ~ 31V
RPH13K0-36CDA	V1: +36V ±5%	0A	83.3A	83.3A	360mVp-p	±1%	±1%	92.5% Min.	47.8 ~ 53.2V
RPH13K0-48CDA	V1: +48V ±5%	0A	62.5A	62.5A	480mVp-p	±1%	±1%	93% Min.	54 ~ 60V
RPH13K0-96CDA	V1: +96V ±5%	0A	31.25A	31.25A	1000mVp-p	±1%	±1%	94% Min.	140 ~ 165V

## CE Standards

EN 55032, EN 55035,  
EN 61000-3-2, EN 61000-3-3,  
(EN 61000-4-2, EN 61000-4-3,  
EN 61000-4-4, EN 61000-4-5,  
EN 61000-4-6, EN 61000-4-8,  
EN 61000-4-11)  
LVD: EN 62368-1

## Safety Standards

 UL 62368 Meet  
 CE Marking

## Environments

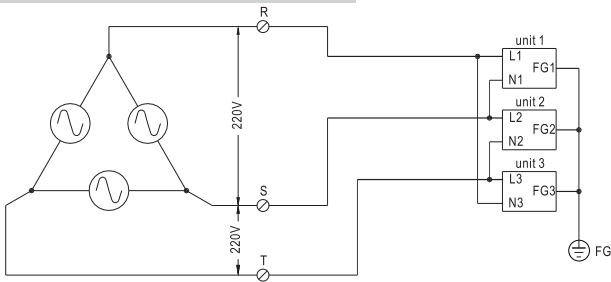
Operating Temperature -15 ~ 50°C, Ambient  
Operating Humidity 20 ~ 90% RH, No Condensing  
Storage Temperature -20 ~ 85°C, Ambient  
Vibration 2G, 10~500Hz, 3 axes

- NOTE:**
1. Each output can provide up to maximum load, but total load can not exceed rated output power.
  2. Line regulation is measured from low line to high line at rated load.
  3. Load regulation is measured from 20% to 100% of rated load at 220VAC input.
  4. Ripple & Noise are measured with 20MHz oscilloscope at 220VAC by using a 20cm long 12” twisted pair-wire with a 0.1uF/630V metal capacitor & a 47uF electrolytic capacitor parallel on the test point.
  5. Efficiency is measured at rated load and 220VAC input.
  6. Hold-up time is measured at rated load and 220VAC input.
  7. Output Voltage Adjustable is measured on 5% of rated load.
  8. Reign Power reserve the right to change specifications at any time without notice.

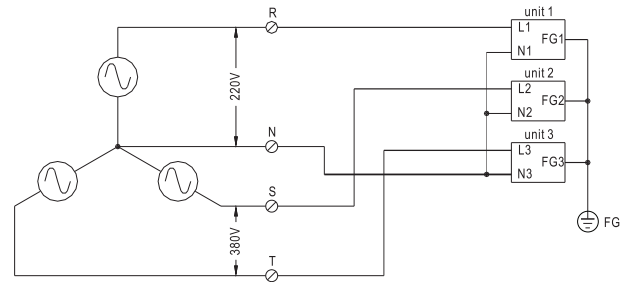


All the patents are held accountable counterfeiting.

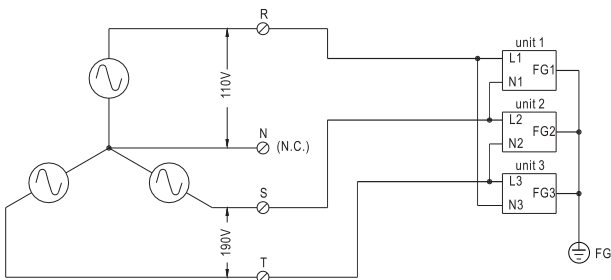
3 Phase Application Circuit



3 phase 3 line 220VAC system



3 phase 4 line 220/380VAC system

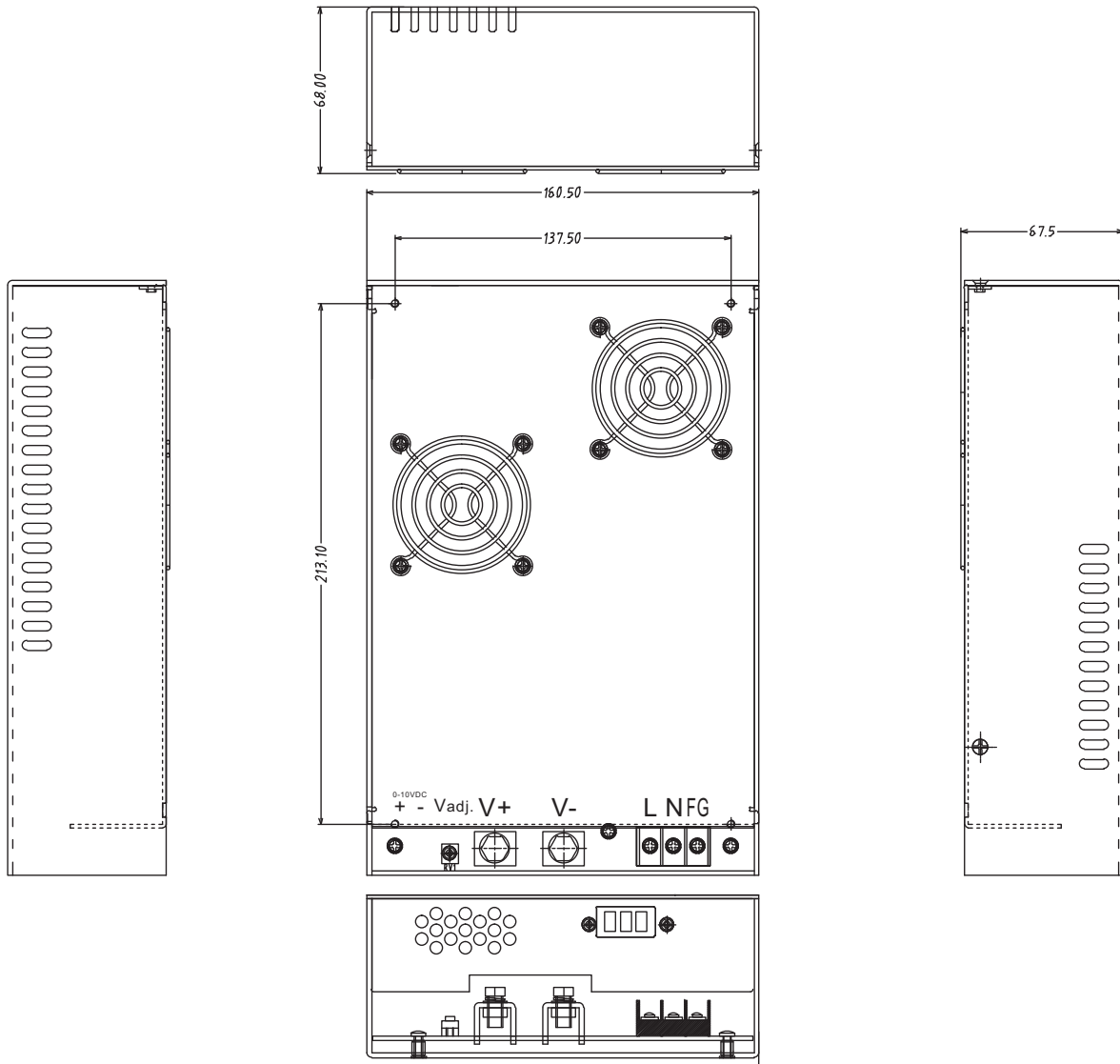


3 phase 4 line 190/110VAC system



All the patents are held accountable counterfeiting.

Mechanical Details



Panel Designation

CASE NO. : CS3K0  
 UNIT : mm  
 DIMENSION : 234.6(L)\*160.5(W)\*67.5(H)  
 MATERIAL : ALUMINUM  
 COLOR : ORIGINAL ALUMINUM

Symbol	Description
L	Line Terminal Of AC Input (No Polarity At DC Input)
N	Neutral Terminal Of AC Input (No Polarity At DC Input)
FG	Grounding (Earth)
V+	DC Positive Output Terminal
V-	DC Ground Output Terminal
V adj.	Potentiometer For Output Voltage
+	Potentiometer For Output Voltage (70%-100%): Positive Input Terminal (0-10V)
-	Potentiometer For Output Voltage (70%-100%): Ground Input Terminal (0-10V)